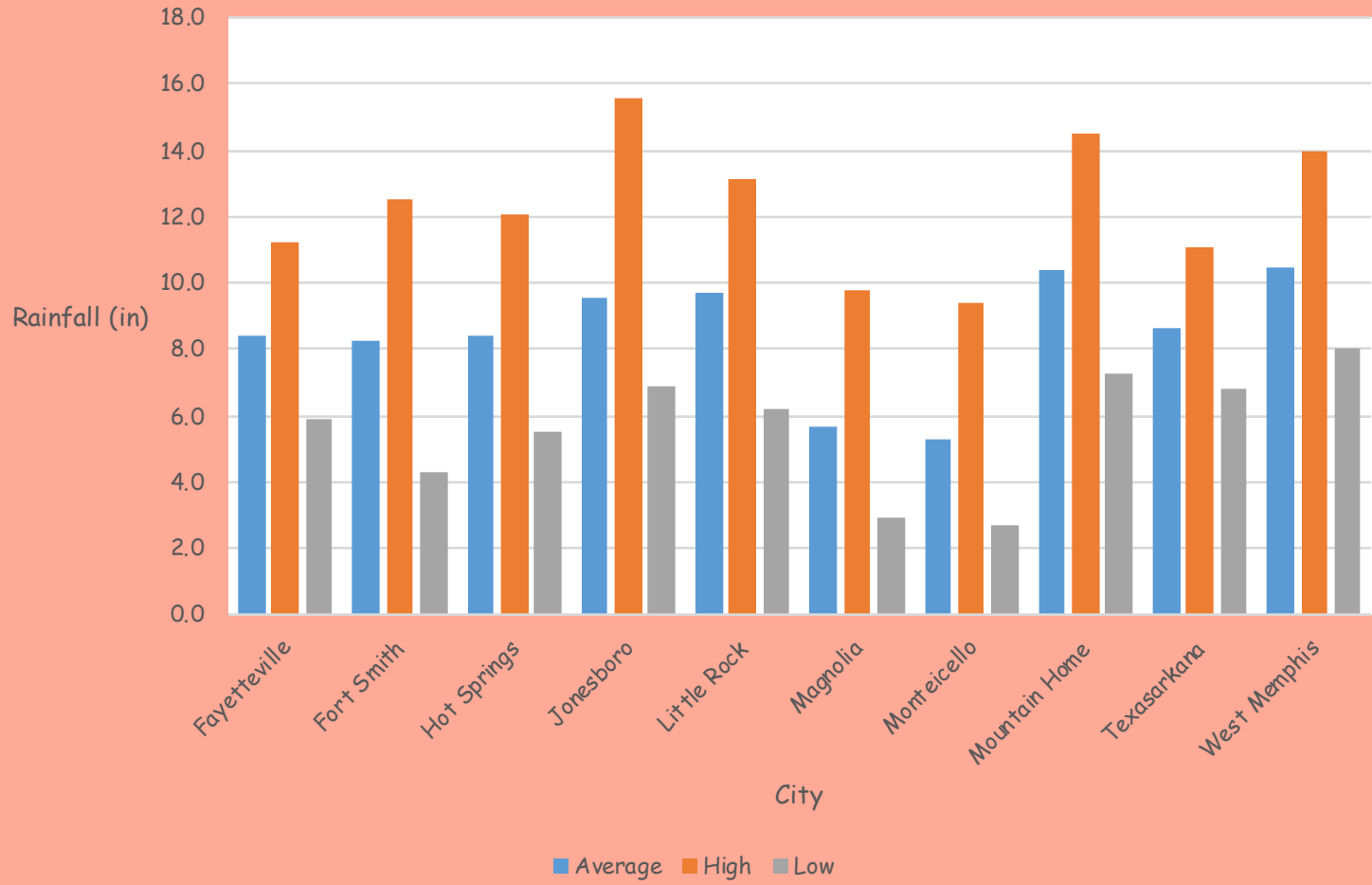


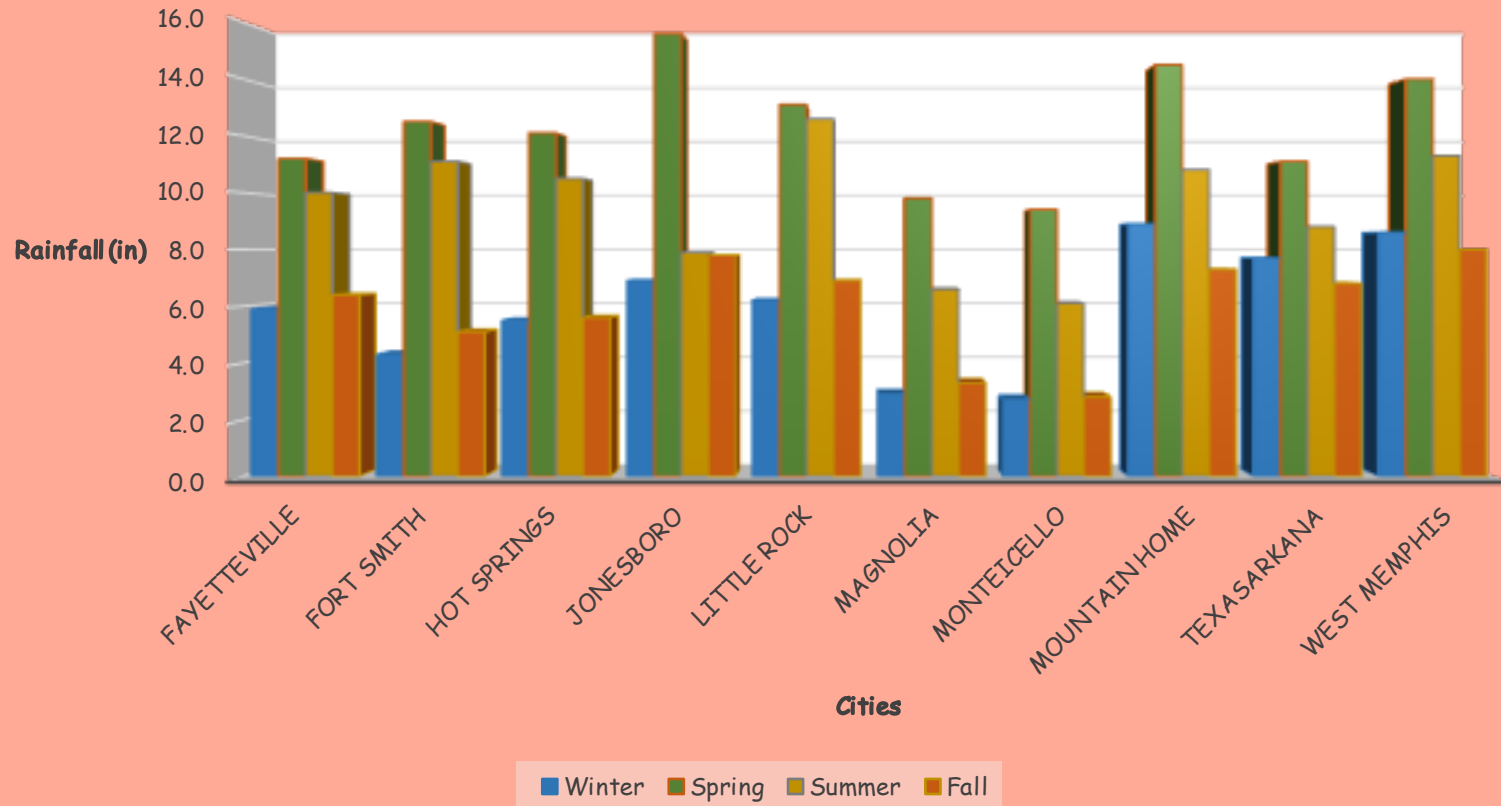
Rainfall in Arkansas

City	Winter	Spring	Summer	Fall	Total	Average	High	Low
Fayetteville	5.9	11.2	10.0	6.4	33.5	8.4	11.2	5.9
Fort Smith	4.3	12.5	11.1	5.1	33.0	8.3	12.5	4.3
Hot Springs	5.5	12.1	10.5	5.6	33.7	8.4	12.1	5.5
Jonesboro	6.9	15.6	7.9	7.8	38.2	9.6	15.6	6.9
Little Rock	6.2	13.1	12.6	6.9	38.8	9.7	13.1	6.2
Magnolia	2.9	9.8	6.6	3.3	22.6	5.7	9.8	2.9
Monteicello	2.7	9.4	6.1	2.8	21.0	5.3	9.4	2.7
Mountain Home	8.9	14.5	10.8	7.3	41.5	10.4	14.5	7.3
Texasarkana West	7.7	11.1	8.8	6.8	34.4	8.6	11.1	6.8
Memphis	8.6	14.0	11.3	8.0	41.9	10.5	14.0	8.0
Total	59.6	123.3	95.7	60.0	338.6	84.7	123.3	59.6
Average	6.0	12.3	9.6	6.0	33.9	8.5	12.3	6.0
High	8.9	15.6	12.6	8.0	41.9	10.5		
Low	2.7	9.4	6.1	2.8	21.0	5.3		

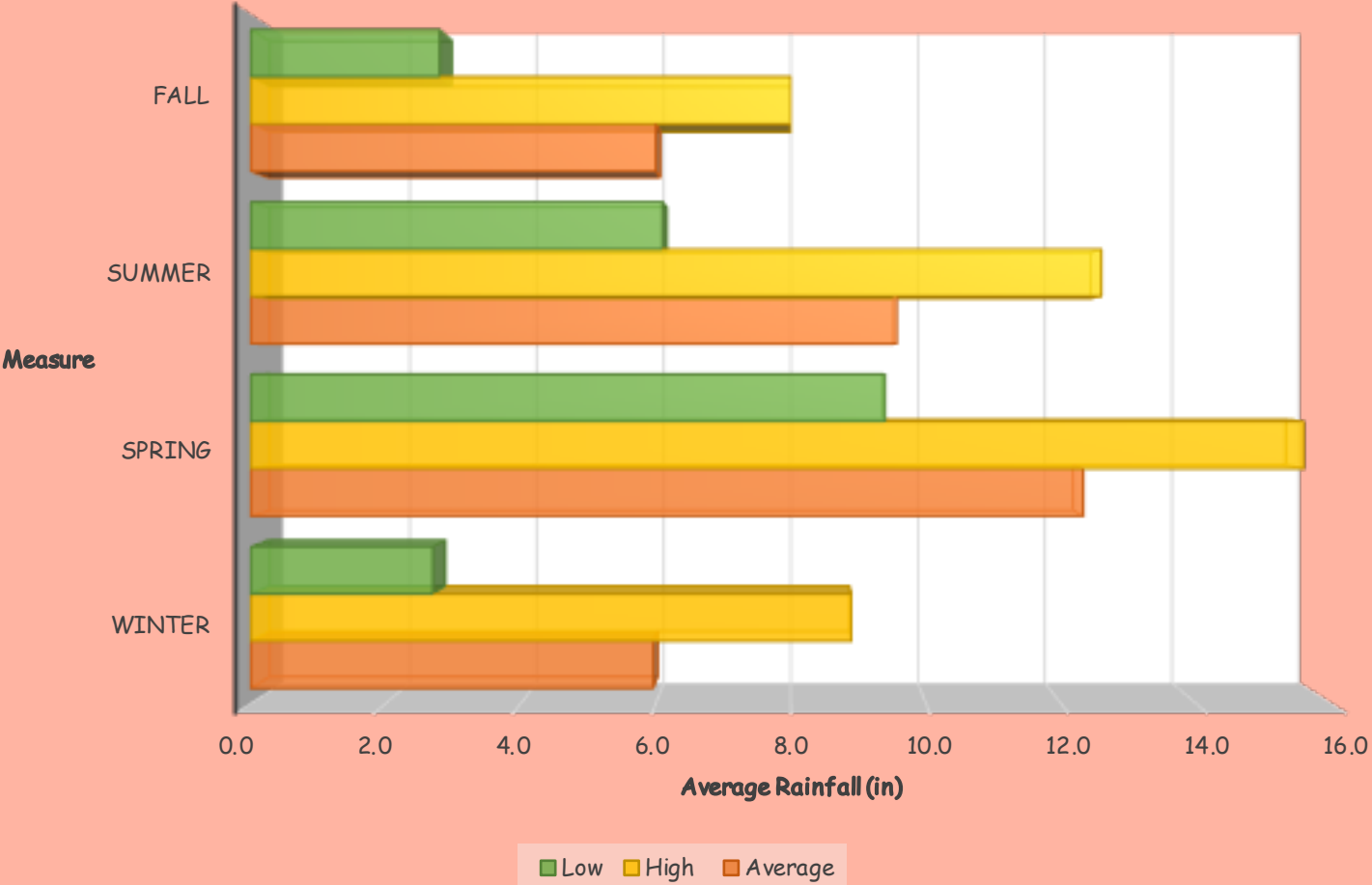
City Average & High/Low



Rainfall per Season



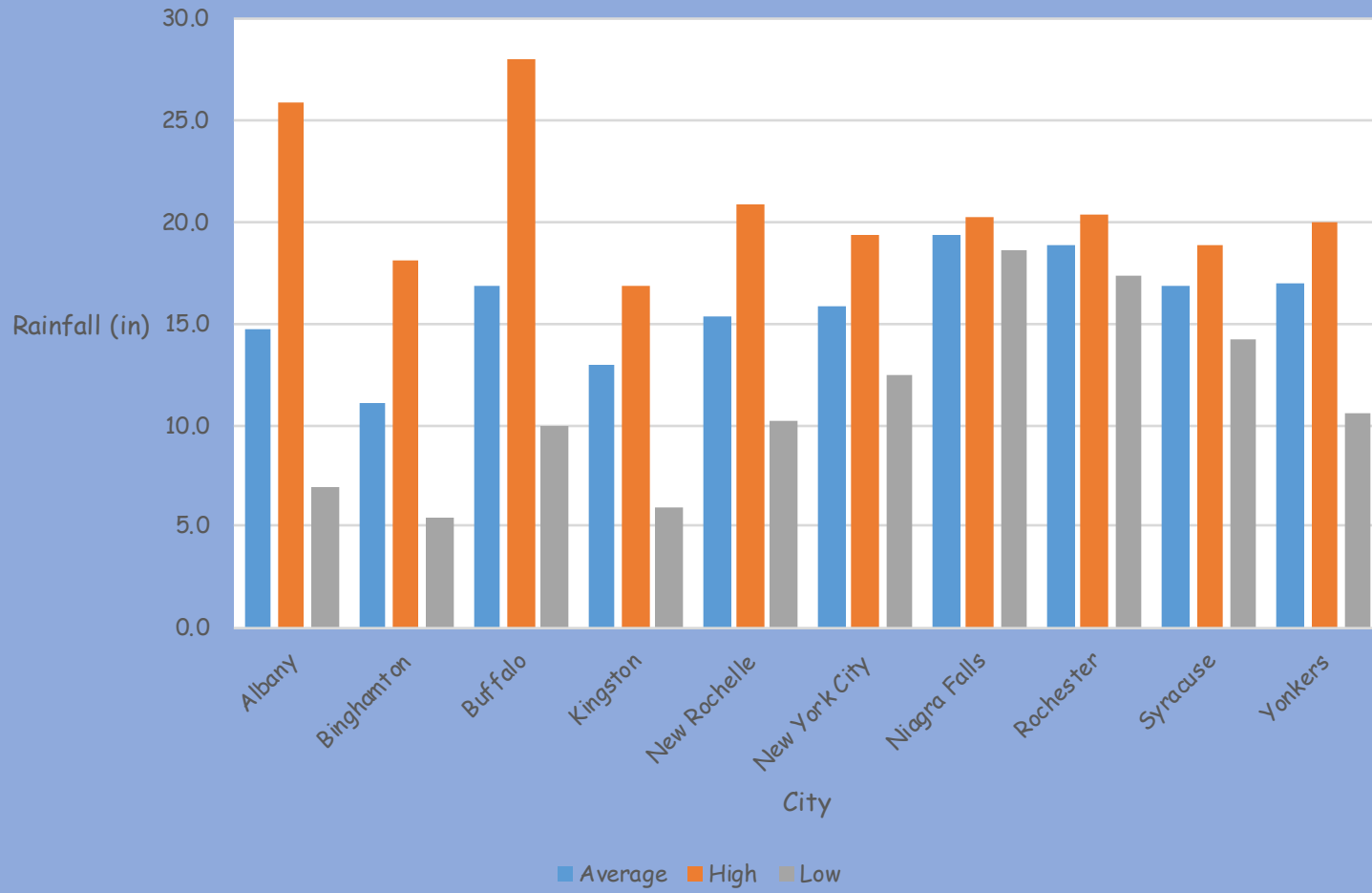
Season Average & High/Low



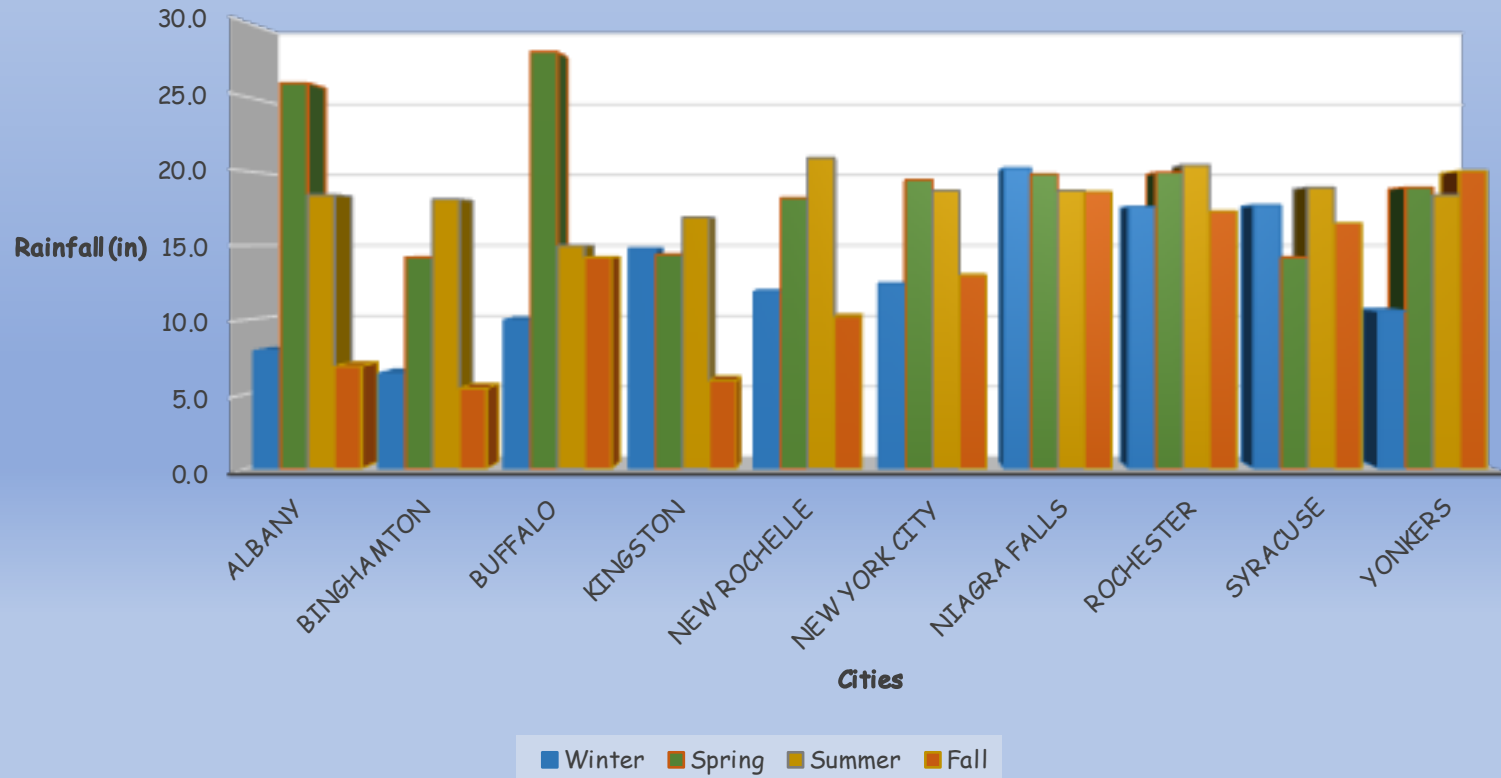
Rainfall in New York

City	Winter	Spring	Summer	Fall	Total	Average	High	Low
Albany	7.9	25.9	18.4	6.9	59.1	14.8	25.9	6.9
Binghamton	6.4	14.2	18.1	5.4	44.1	11.0	18.1	5.4
Buffalo	10.0	28.0	15.0	14.2	67.2	16.8	28.0	10.0
Kingston	14.8	14.4	16.9	5.9	52.0	13.0	16.9	5.9
New Rochelle	11.9	18.2	20.9	10.2	61.2	15.3	20.9	10.2
New York City	12.4	19.4	18.7	13.0	63.5	15.9	19.4	12.4
Niagra Falls	20.2	19.8	18.7	18.6	77.3	19.3	20.2	18.6
Rochester	17.6	19.9	20.4	17.3	75.2	18.8	20.4	17.3
Syracuse	17.7	14.2	18.9	16.5	67.3	16.8	18.9	14.2
Yonkers	10.6	18.9	18.4	20.0	67.9	17.0	20.0	10.6
Total	129.5	192.9	184.4	128.0	634.8	158.7	192.9	128.0
Average	13.0	19.3	18.4	12.8	63.5	15.9	19.3	12.8
High	20.2	28.0	20.9	20.0	77.3	19.3		
Low	6.4	14.2	15.0	5.4	44.1	11.0		

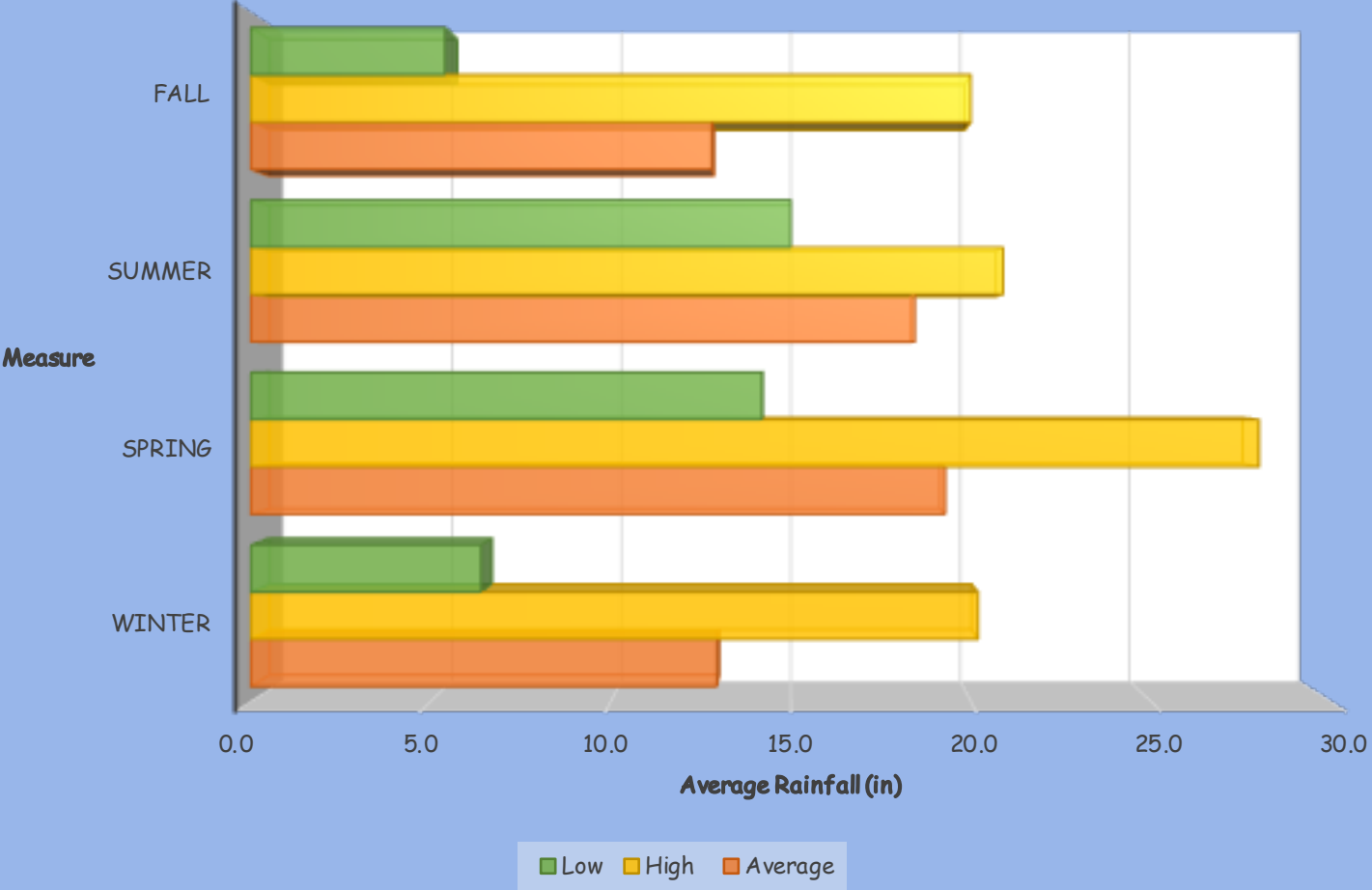
City Average & High/Low



Rainfall per Season



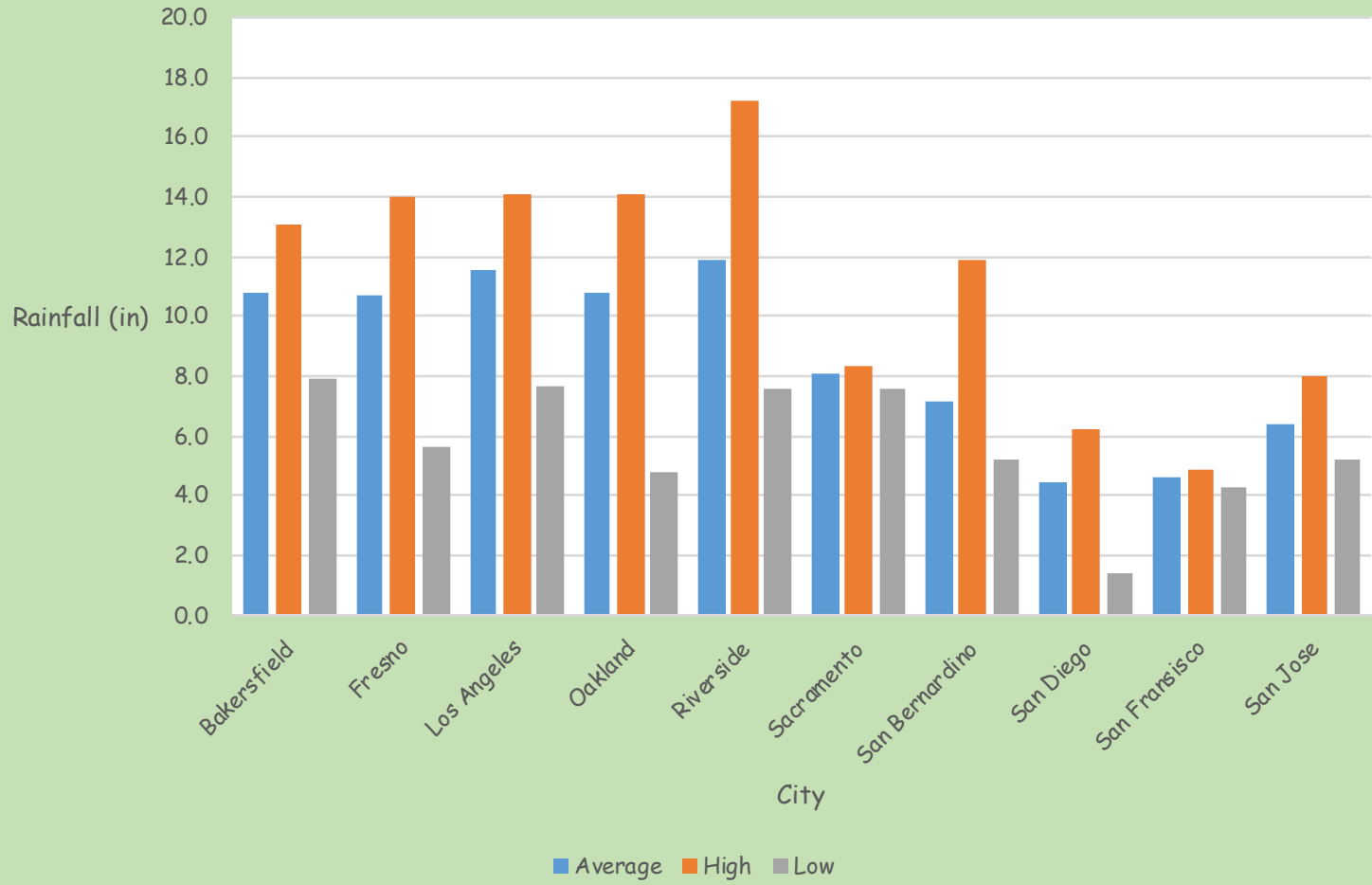
Season Average & High/Low



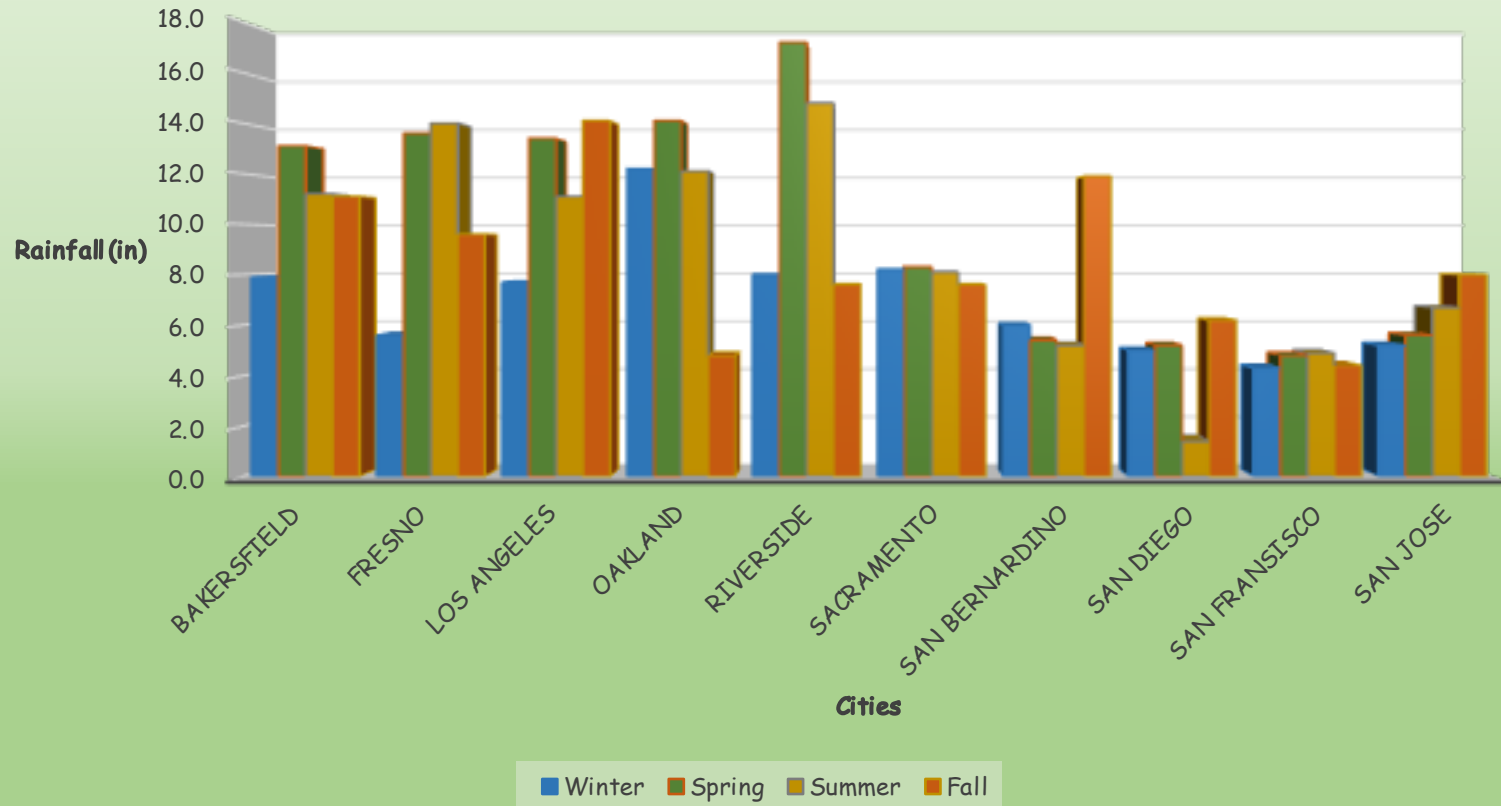
Rainfall in California

City	Winter	Spring	Summer	Fall	Total	Average	High	Low
Bakersfield	7.9	13.1	11.2	11.1	43.3	10.8	13.1	7.9
Fresno	5.6	13.6	14.0	9.6	42.8	10.7	14.0	5.6
Los Angeles	7.7	13.4	11.1	14.1	46.3	11.6	14.1	7.7
Oakland	12.2	14.1	12.1	4.8	43.2	10.8	14.1	4.8
Riverside	8.0	17.2	14.8	7.6	47.6	11.9	17.2	7.6
Sacramento	8.2	8.3	8.1	7.6	32.2	8.1	8.3	7.6
San Bernardino	6.0	5.4	5.2	11.9	28.5	7.1	11.9	5.2
San Diego	5.0	5.2	1.4	6.2	17.8	4.5	6.2	1.4
San Francisco	4.3	4.8	4.9	4.4	18.4	4.6	4.9	4.3
San Jose	5.2	5.6	6.7	8.0	25.5	6.4	8.0	5.2
Total	70.1	100.7	89.5	85.3	345.6	86.4	100.7	70.1
Average	7.0	10.1	9.0	8.5	34.6	8.6	10.1	7.0
High	12.2	17.2	14.8	14.1	47.6	11.9		
Low	4.3	4.8	1.4	4.4	17.8	4.5		

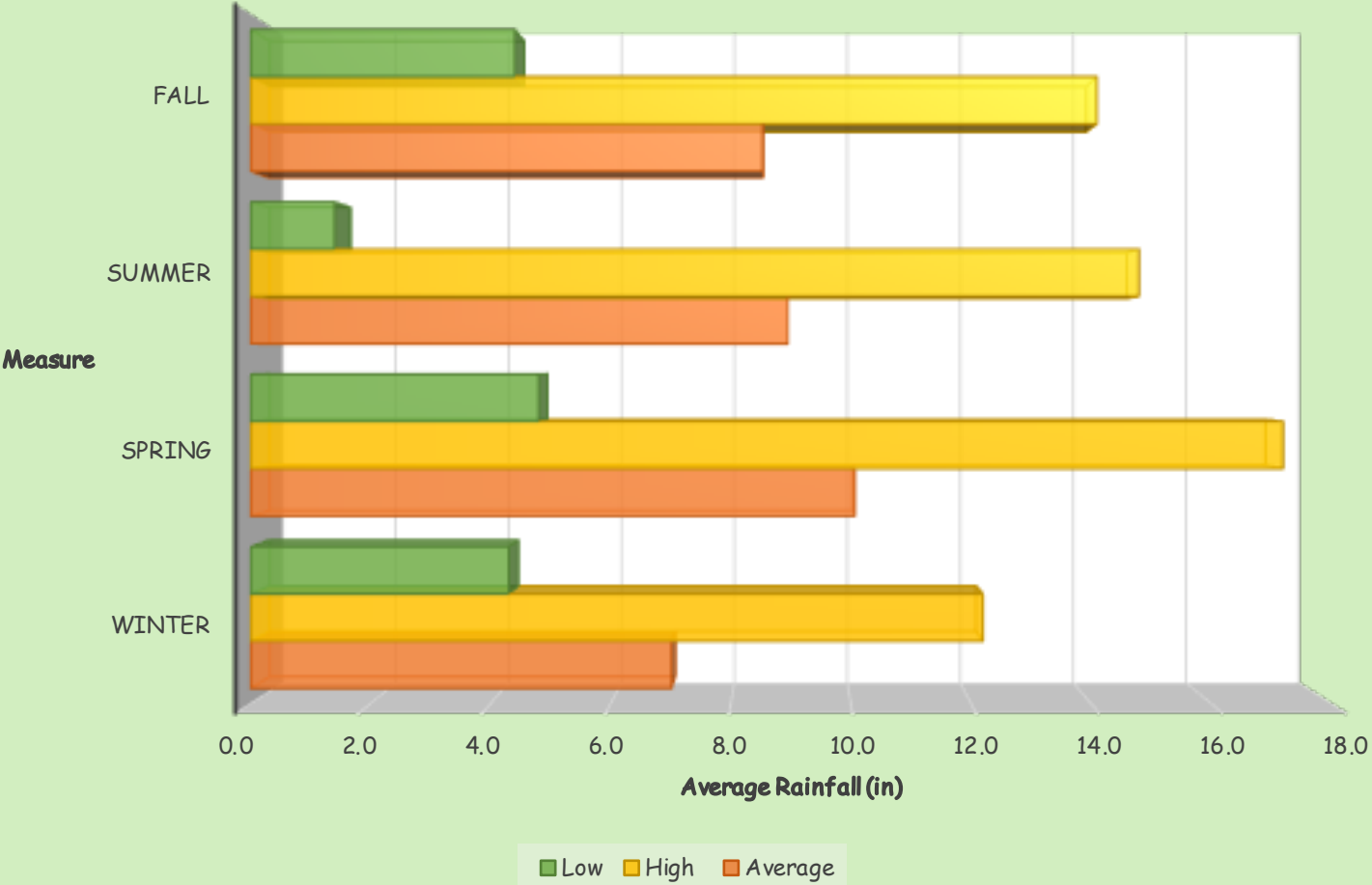
City Average & High/Low



Rainfall per Season



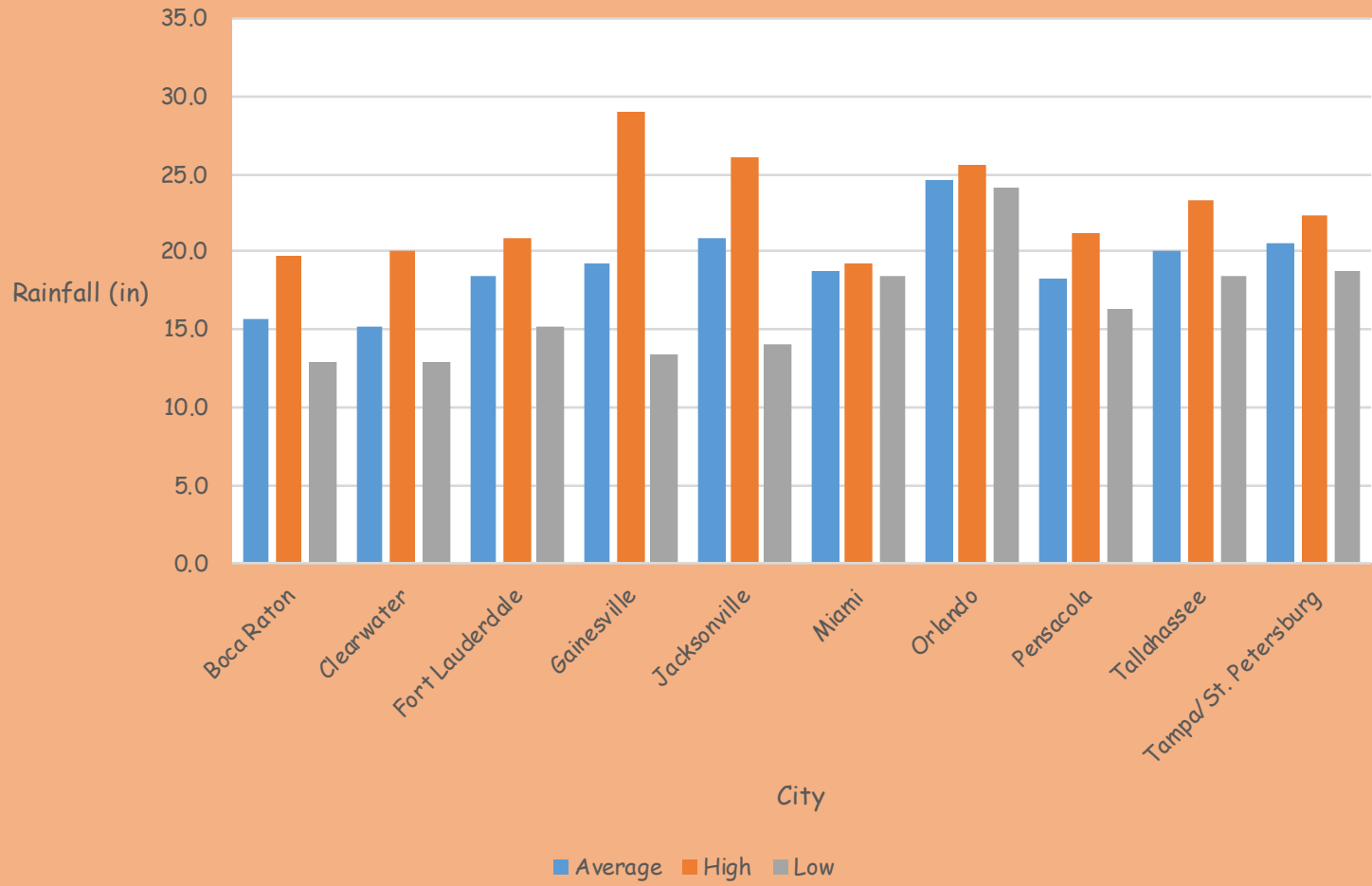
Season Average & High/Low



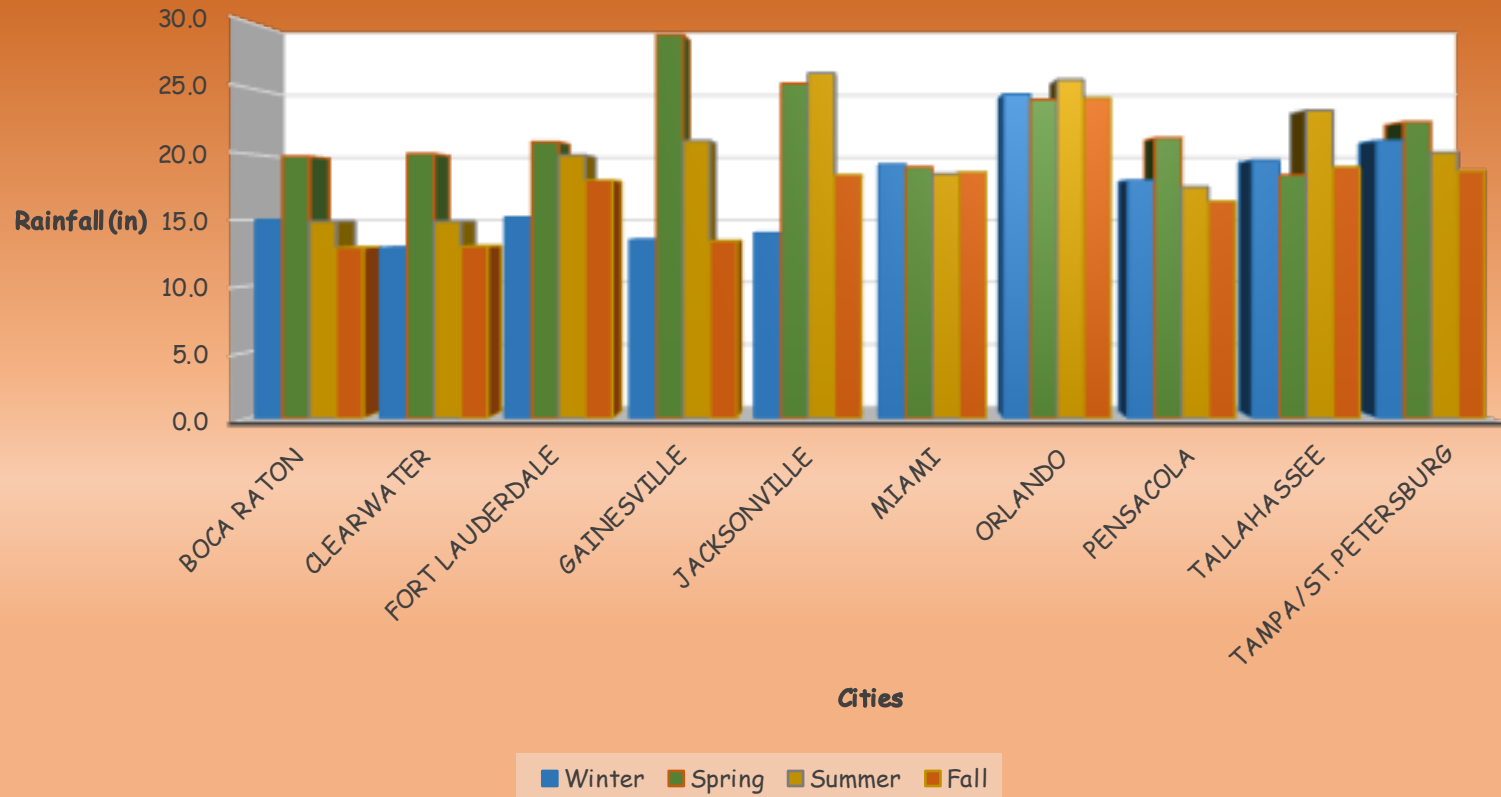
Rainfall in Florida

City	Winter	Spring	Summer	Fall	Total	Average	High	Low
Boca Raton	15.0	19.8	14.9	12.9	62.6	15.7	19.8	12.9
Clearwater	12.9	20.0	14.9	13.0	60.8	15.2	20.0	12.9
Fort Lauderdale	15.2	20.9	19.9	18.0	74.0	18.5	20.9	15.2
Gainesville	13.5	29.0	21.0	13.4	76.9	19.2	29.0	13.4
Jacksonville	14.0	25.3	26.1	18.4	83.8	21.0	26.1	14.0
Miami	19.2	19.0	18.5	18.6	75.3	18.8	19.2	18.5
Orlando	24.5	24.1	25.6	24.2	98.4	24.6	25.6	24.1
Pensacola	18.0	21.2	17.5	16.4	73.1	18.3	21.2	16.4
Tallahassee	19.5	18.4	23.3	19.0	80.2	20.1	23.3	18.4
Tampa/St. Petersburg	21.0	22.4	20.1	18.7	82.2	20.6	22.4	18.7
Total	172.8	220.1	201.8	172.6	767.3	191.8	220.1	172.6
Average	17.3	22.0	20.2	17.3	76.7	19.2	22.0	17.3
High	24.5	29.0	26.1	24.2	98.4	24.6		
Low	12.9	18.4	14.9	12.9	60.8	15.2		

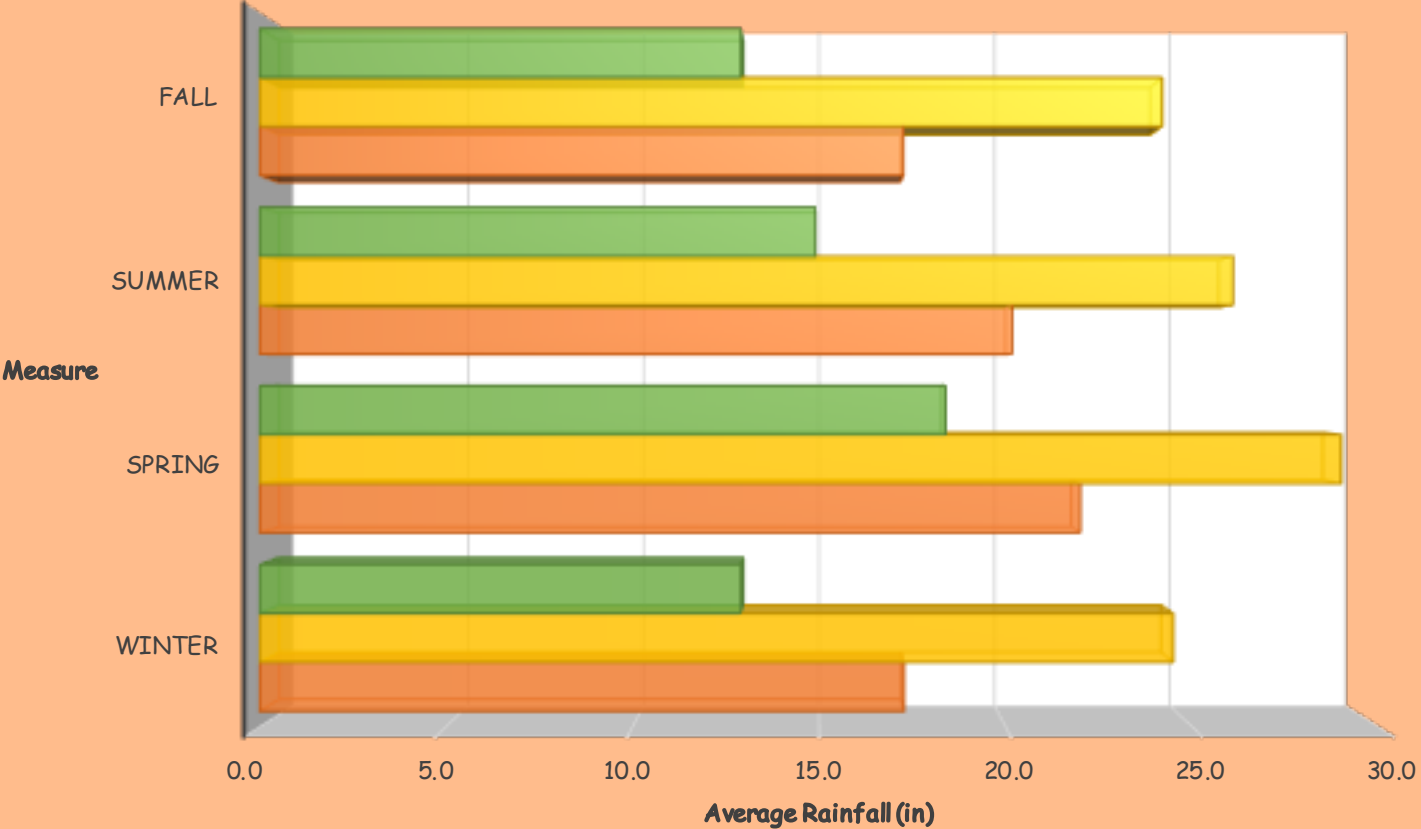
City Average & High/Low



Rainfall per Season



Season Average & High/Low

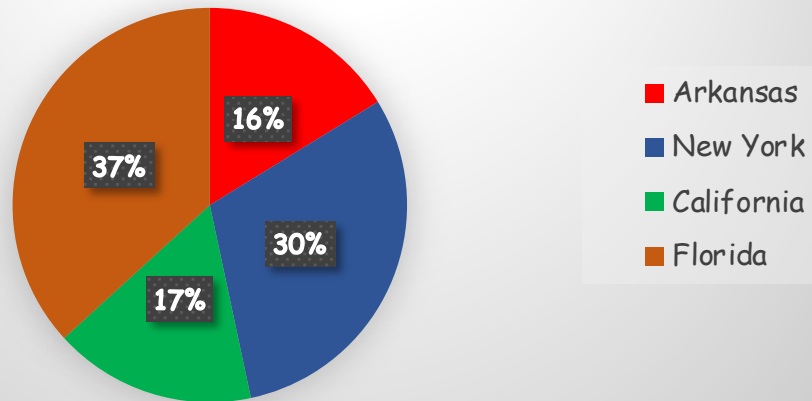


Low High Average

Comparison

	Rainfall Total	City Average	Season Average	Season High	Season Low
Arkansas	338.6	33.9	84.7	123.3	59.6
New York	634.8	63.5	158.7	192.9	128.0
California	345.6	34.6	86.4	100.7	70.1
Florida	767.3	76.7	191.8	220.1	172.6
Total	2086.3	208.6	521.6	637.0	430.3
Average	521.6	52.2	130.4	159.3	59.6

Rainfall Total



City Average vs Season Average

