

DINOSAURS

CONTENTS

What is a dinosaur?	3
Big and Small	4
Plant eaters	5
Meat eaters	6
Baby Dinosaurs	7
Where did they go?	8
Buried bones	9
Dino Lingo	10

WHAT IS A DINOSAUR?

A dinosaur is a type of reptile. Reptiles are animals with scaly skin, like crocodiles and lizards. Some dinosaurs lived for more than 100 years. There are two types of dinosaurs: Omnivores and Herbivores.

Omnivores are
the meat
eaters!



Herbivores
are the plant
eaters!



BIG AND SMALL

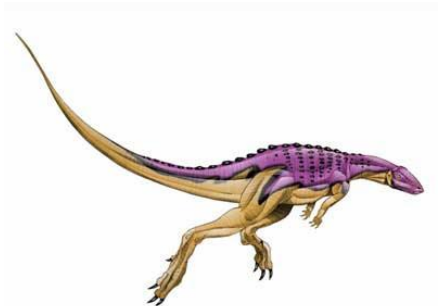
BIG



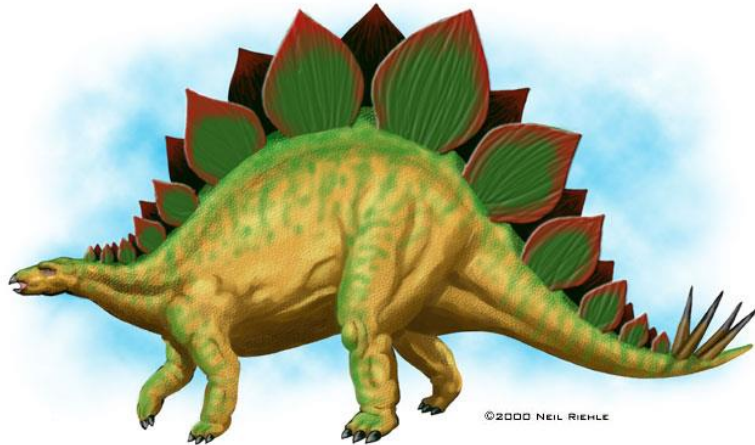
Some dinosaurs were the biggest land animals ever. The Brachiosaurus above was heavier than 15 elephants!

Some dinosaurs were very small. A dinosaur called the Microraptor was smaller than a hen.

SMALL



PLANT EATERS



Lots of dinosaurs ate plants. They spent all day feeding on tasty leaves! Many of the dinosaurs that looked big and scary were only plant eaters! Some of the plant eaters were Stegosaurus, Brontosaurus, and Diplodocus.

MEAT EATERS



Some dinosaurs ate meat. We call those the Carnivores! They would eat lizards, snakes, and other animals too. They were the hunters and predators of the dinosaurs and were very fast. Some of these dinosaurs were the Velociraptor, Pterodactyl, and of course the Tyrannosaurus Rex!

BABY DINOSAURS

Baby dinosaurs hatched out of eggs. A mother dinosaur made a nest and could lay up to 20 eggs! Dinosaur eggs came in all shapes and sizes. The baby dinosaurs would hatch themselves out of the eggs and immediately start looking for food.



WHERE DID THEY GO?

Dinosaurs lived for millions of years but then they suddenly died out. No one is sure why. Many scientist think that a big space rock crashed into Earth causing huge fires and volcanoes to erupt leaving nothing for the dinosaurs to eat.



BURIED BONES

Scientists find bones in the ground. The bones have turned to stone and are called fossils. Dinosaur fossils are found all the time. There might be some in the ground beneath you!



DINO LINGO

Herbivore- A plant eater

Carnivore- A meat eater

Scaly- Skin that is covered in lots of tiny, thin plates

Predator- Hunts other animals to eat

Hatch- Break out of the egg

Fossil- A bone or other part of an animal that has turned into stone